



Litchfield

COUNTRY CLUB

LCC POA NEWSLETTER

Volume I Issue 72 Winter Issue 2025

Special Points of Interest

LCC POA
PO Box 482
Pawleys Island, SC 29585

Hotline Phone
518-506-5973
Ken Fetzner

Support our advertisers in this newsletter. Let them know that you saw their ad in the LCC newsletter.

Membership Dues

- Standard \$65/yr.
- Honors \$100+/yr.
- Dues Year Jan-Dec

Inside this Issue:

Memo From Your Directors 2

Quigley's 3

Board Members 4

Keep It Green 5

Keeping Our Neighborhood Clean

Each month a dedicated group of individuals travels throughout the neighborhood with trash bags in tow. Several even do it weekly for the good of the cause! If you would be interested in helping out, please contact Trish for more information at trish@litchfieldpoa.com or call (215)514-9477

The Community That Cares

MISSION STATEMENT: "It is the Mission of the Litchfield Country Club Property Owners Association to enhance the quality of life for all property owners within the Litchfield Country Club community by protecting property values, encouraging compliance with the covenants and restrictions of the subdivision, disseminating timely and useful information, promoting social interaction, supporting security watches and to remain guided by the belief that we should all look out for one another."

What's Happening.....Or Not



A NOTE OF APPRECIATION FROM Robin Agnew, POA President 2025 LCC

POA Annual Meeting is a WRAP!

Thank you to all POA members, Litchfield Country Club and special Guests who spent some time with the POA Board Saturday, January 18th, with election of officers and a summary review of the year with fruitful discussion. Eric Glosick and Jodi Cotten welcomed all of us with smiling faces, tasty pastries and coffee to keep us warm and alert! It was truly a wonderful and informative meeting. Eric and his team talked about "all things at Litchfield Golf" followed by Georgetown County Sheriff's office, Captain Chuck Weaver who delivered info on break-in's, scam calls, speeding and wonderful deterrents for us to consider, i.e, flood lights, and ring cameras suggested. Captain Weaver also delivered an introduction to our new Community liaison, Lt Joseph Kosydar who will help us with speeding issues..such good NEWS. A good segue into our next guest, our very own Midway Fire & Rescue Chief, Brent McClellan who emphasized to all of us the importance of workable "smoke alarms" and the amazing number of calls his team receives...(remember we are blessed)...CPR classes also coming our way. Our own District 6 Council Representative, Stella Mercado, fielded questions at the end with all members & guests invited to stick around for one-to-one dialogue.

Thanks again to everyone for your insight, your patience, and your enthusiasm... it's CONTAGIOUS!

THANK YOU for your continued support of your LCCPOA. Stay Well! Be Safe!

Your LCC POA Board of Directors

Robin Agnew - President

Jerry Oakley - Former President

Bill Ringer - Vice President

Grant Anglemyer - Secretary

Trish Mulligan - Treasurer

Ken Fetzner - Neighborhood Safety-Security Coordinator

Margaret Lamb - Special Events Coordinator

Quigley's Next Door Gathering on November 14th:



What a wonderful turnout we had of our fellow neighbors for good food, conversation and donations! Thank you to all who attended and brought a non-perishable item for our local Baskervill Food Pantry!

And, a special "Thank you" also to our own local DJ Brett Gash who continues to entertain us with fabulous oldies and beach music!



In fact, we heard back from so many of you that you had so much fun that we are planning on another outing this Spring. So keep a look out for a future date to be announced!



LCCPOA Board Members

Robin Agnew	President	843-222-1731	robin@litchfieldpoa.com
Jerry Oakley	Former President	843-237-8944	jerry@litchfieldpoa.com
Bill Ringer	Vice President	704-458-6729	bill@litchfieldpoa.com
Grant Anglemyer	Secretary	843-314-9171	grant@litchfieldpoa.com
Trish Mulligan	Treasurer	215-514-9477	trish@litchfieldpoa.com
Ken Fetzner	Board Member	518-506-5973	ken@litchfieldpoa.com
Margaret Lamb	Board Member	843-957-3113	margaret@litchfieldpoa.com

What can we do about speeding in LCC?

Speeding remains the number one concern expressed by LCC POA members. At our recent POA annual meeting, a lieutenant from the Georgetown County Sheriff's Office (GCSO), indicated that if members observe **excessive** speeding, they can report the license number of the offending vehicle better yet, they can send a photo of the license plate to GCSO and an officer will contact the owner of that vehicle warning them about speeding in Litchfield Country Club. For commercial vehicles the same applies or we can report the company name and the time of the infraction.

Common sense should be applied so that the GCSO is not overburdened by following up on reported speeding that is estimated to be less than, say 35 mph. Please use your best judgment. The higher speed drivers pose the most danger to walkers, children and pets.

To report an excessive speeding incident contact POA Safety Director, **Ken Fetzner**, (ken@litchfieldpoa.com). GCSO would prefer that these notifications come from a single source. To ensure reporting accuracy, it would be better to email Ken rather than calling him."

Thanks for your efforts to make LCC a safer neighborhood.

News & Updates From The Waccamaw Neck



Here we are in 2025! How did that happen so quickly? Wasn't it just the turn of the century a few years ago? Regardless, Keep It Green now enters its sixth year of working to preserve and protect the quality of life here on the Waccamaw Neck, and we have all of you to thank for your ongoing and generous support!

Here's a few updates on what's happening so far this year:

- The County Council begins the year with two new representatives, both from the western part of the county. Ron Charlton was elected to represent District 4, replacing Lillie Jean Johnson, who decided not to run for reelection. Some of you may remember that his father, Ron Sr., served on the County Council for 24 years. Rev. Ernie Cooper was elected to represent District 3, replacing incumbent Everett Carolina. KIG will be meeting with both new Councilors in the coming months to discuss matters important to Waccamaw Neck residents.
- Bob Anderson was reelected to represent District 2 for another four-year term. The other two Waccamaw Neck Councilors, Stella Mercado of District 6 and Clint Elliott of District 1, will continue serving out their terms through 2026. You can do the math, but the Neck only has three representatives out of seven on County Council, which can sometimes be a challenge in ensuring our voices are heard.
- County Council meets twice a month on the second and fourth Tuesdays, except in the months of June, July, August, November and December, when they only meet once a month on the fourth Tuesday. Meetings start at 5:30PM in Council Chambers in the old County Courthouse, 129 Screven Street, Georgetown.
- Planning Commission meets once a month on the third Thursday of every month, at 5:30PM in Council Chambers in the old County Courthouse, 129 Screven Street, Georgetown.
- Agendas for County Council are published the Friday prior to the next meeting date and can be found at www.gtcounty.org/council. Council meetings can also be viewed on the Georgetown County Council's YouTube page. Agendas for Planning Commission are also published the Friday prior to the next meeting date and can be found at www.gtcounty.org/agendacenter. We encourage you to attend and be informed. Also, we would encourage you to speak on matters of interest to you.

News & Updates From The Waccamaw Neck (cont.)

- Palmetto Giving Day is only a few months away, on May 6-7, and Keep It Green Advocacy (KIGA) will be participating for our third year. We look forward to your continuing support.

KIG and KIGA continue to fight to protect and preserve our quality of life here on the Waccamaw Neck. We fully appreciate all of you who count yourselves as supporters of the Mission, and we will do everything possible to earn your support. Thank you!

Finally, Happy Valentines Day to everyone, and if you haven't made a restaurant reservation, yet, "Fuhgedaboutit!"

**Thank you for your continued support of Keep It Green and
Keep it Green Advocacy.**

Please visit our website, keepitgreeninsc.com, for current information on our activities, or to make a donation. Also, please follow us on social media, Facebook and Instagram, at keepitgreeninsc.

As a 501©3 non-profit organization, you can make tax-deductible donations to support the cause:

www.keepitgreeninsc.org

KeepItGreen.PI@gmail.com

Disclaimer

The Litchfield Country Club POA newsletter aims to provide relevant updates and information for our community. Any content, messages, or statements from third-party organizations, non-profits, or contributors included in this publication are provided for informational purposes only and do not reflect the views, opinions, or endorsements of the The Litchfield Country Club POA its Officers and it's Board of Directors.

We strive to maintain a neutral and inclusive platform for all community members, and while we welcome diverse perspectives, the inclusion of specific materials should not be interpreted as an endorsement or promotion of any political, ideological, or personal agenda.

Report from Stella Mercado – Georgetown County Council

It's an honor to represent District 6 on the County Council.

Protecting our quality of life and natural resources is vital to our community. That's why I want to make you aware of the facts about the recently passed county Land Use Plan and Future Land Use Map.

After gathering public input for several years, including nearly 2,000 citizen submitted surveys (70 percent came from the Waccamaw Neck), stakeholder focus groups, public "open house" meetings, and Planning Commission recommendations, County Council approved a Land Use Plan and Future Land Use Map in July that cuts residential development density by 50 percent on the Waccamaw Neck.

According to a county consultant's report, the Future Land Use Map cuts Waccamaw Neck development density that's allowed under the current county zoning ordinance, from 25,201 units to 12,622 units, a 50 percent reduction.

Based on public input, the following are also included in the plan:

- Significant density reduction in General Residential zoned areas.
- Preservation of existing neighborhoods as low to medium density.
- Preservation of golf courses with very low-density zoning and significant open greenspace requirements.
- Preservation of 50 percent of open space for remaining undeveloped land on Waccamaw Neck.
- Wetlands protections
- Greenbelt preservation program
- Preservation of historic and cultural places

Report from Stella Mercado – Georgetown County Council (cont.)

Georgetown County is starting a rewrite of its zoning ordinance to incorporate the policy recommendations in the Land Use Plan. The Future Land Use Map will be the guide for zoning map updates.

In the interim, I led, and County Council passed, an ordinance in September to reduce multi-family density by 70 percent (16 units per acre to 5 units) on the Waccamaw Neck.

The Land Use Plan and Future Land Use Map are just one element of the County Comprehensive Plan, which considers the area's existing conditions, future goals and a general vision for what future growth and development within the county will look like over the next 10 to 20 years. The other elements of the Comprehensive Plan are natural resources, transportation, housing, population, resiliency, economic development, priority investment, community facilities, and cultural resources. The goals and objectives of these elements are tied closely together to form a unified Comprehensive Plan.

Under state law, the Comprehensive Plan and all elements, including the Land Use Plan must be reevaluated and reviewed every five years and must be rewritten every ten years. The next review for Georgetown County is 2029 and rewrite is 2034.

Information about the plan can be found at www.gtcounty.org/396/Comprehensive-Plan

I hope this information is helpful. Please contact me if I can be of any assistance.

***GT County office:** (843) 545-3058

***Personal cell:** (703) 629-5986

***Email:** stellamercado@gtcounty.org

“Litchfield Country Club POA” Facebook Page

Just like almost everyone and every organization in the world, the Litchfield Country Club POA maintains a Facebook Page and it is open to everyone. Find information on current and planned future events, articles and write-ups about your neighbors, and access to important documents such as the LCC covenants and restrictions, guidelines regarding those restrictions, a remodel of your current home, or changes to your yard and landscaping such as pool addition or a new/ replacement fence.

Send In An Article

We welcome authors, artists, household tips, recipes, gardening ideas...

Have a great story to share? Have a favorite Pet or hobby you want to tell us about? Not good at composing? We will send one of our talented writers to hear your story and write it for you!

We would love to have neighbors add to our newsletter for all to enjoy!

Send your pictures and articles to Trish at trish@litchfieldpoa.com

Community Committee Opportunities

The LCCPOA supports several different committees that serve our neighborhood. If you would like to work with one of these committees, please contact the current committee chair or one your board members for more information on the committee.

Decorations - Looking for a new Chair to lead the group

Anne Rexroat	(843) 235-9189	annerexroat@gmail.com
Ann Corbett	(843) 237-9602	anncorbett60@yahoo.com
Welcome - Barbara Frain	(704) 519-6040	barbararfrain@gmail.com
Activities - Margaret Lamb	(843) 957-3119	margaret@litchfieldpoa.com
Clean Up - Trish Mulligan	(215) 514-9477	trish@litchfieldpoa.com
Yard of Mo. - Andrea Berkeley	(213) 618-1915	andreacucolo@icloud.com

Community Corner

You have ideas for Social Activities? Email: litchfieldpoa@litchfieldpoa.com

Important Notice

If you are considering future construction in LCC, please let us know by contacting Bill Ringer at [<litchfieldpoa@litchfieldpoa.com>](mailto:litchfieldpoa@litchfieldpoa.com) to obtain request forms. APPLIES TO ALL LCC property owners per our deed covenants.

Waccamaw Recreation Center

The Waccamaw Recreation Center has many activities available, some free, and some with a minimum cost (Tai Chi, Pickle Ball, Barre Fitness, Yoga and Walking). It is right in our backyard, so check it out in person or go online to see all that they offer at this time of year.

Hey Bunco Lovers!

Litchfield Ladies Bunco Group is looking for Subs. If you are interested in playing or learning, please call me **Sallie Anderson at (843) 237-9943**.

We play the first Tuesday of every month at 7:00pm at various homes. Our season runs from October to June. Just \$5.00 to play. Join us for a fun night out with the ladies! You might win a gift or even money.

CPR Class

At our Annual POA Meeting on January 18th a list was made of individuals interested in pursuing a class to be held specifically for the Litchfield POA Members. A program will be set up this year. If you missed the annual meeting and are interested in taking a CPR class through Midway please contact Trish Mulligan at (215) 514-9477.

Sallie Anderson	843-237-9943	West Hawthorn (Crooked Oak to Kings River)
Paula Burgin	843-979-5500	West Crooked Oak (Hawthorne to Ingram)
Open-Volunteer Needed		Parkview, Oleander, Bradford, Snowbell, Pampas
Anne Hammond	843-237-1254	Country Club, Sparkleberry, Crosswind Trail
Jean Monk	843-314-3183	Crooked Oak (Ingram to 641 Crooked Oak)
EJ Sprogis	802-922-2828	Blackgum to Sweetgum, Sweetgum to Melrose
Kathy Morris	973-229-3452	Forest Loop
Trish Mulligan	215-514-9477	Hawthorne (Country Club to Crooked Oak)
Marilyn Oberembt	843-237-9194	Aspen Loop
Ed Quillian	727-543-0331	Old Cedar Loop
Jim Scott	843-237-4923	Goodson Loop & Linden Circle
Patti Sutula	410-960-2778	Melrose to East Crooked Oak

LCCPOA Block Captain Responsibilities

- Encourage all residents to join the LCC POA.
- Advise Block Captain Coordinator when someone new (owner or renter) moves in to a house, a resident has had a birth in the family, has passed away or has a serious illness. The coordinator will then notify the proper welcome committee volunteer or board member.
- Deliver occasional fliers and a few Newsletters to members who cannot get them via email.
- Communicate issues to the Block Captain Coordinator who will report information to the LCC POA Board.
- Encourage residents to sign up for our neighborhood watch.
- Refer questions about Spectrum, BFS Trash Collection and our Recycling programs to our web site www.litchfieldpoa.com
- Be informed about our local emergency information.
- Official welcoming of new residents will be done by a Welcome Committee volunteer.

Have you heard of St. Christopher's Children?

Have you heard of St. Christopher's Children? We are a nonprofit organization established in 2007, providing needed clothing and critical orthodontic care for children in Georgetown County, SC, when no one else is there to help with these services. Each year we help over 300 children with basic clothing and have a wait list for orthodontic care. The children are the HEART of our mission. We provide new clothing personally selected by one of our volunteer shoppers. Orthodontic care is prioritized based on the severity of the case. We work closely with local school nurses who see firsthand the needs of these children.

Last year, St Christophers Children provided 25 children with orthodontic care, 241 children with new clothing, and 175 new coats were distributed. Visit our website at www.stchristopherschildren.org to learn more about us or to contribute, and be sure to stop into our Resale Store at 12017 Ocean Highway, Pawleys Island.



A Rescue Dog's TRUE COST

 **GEORGIA JACK RUSSELL RESCUE, ADOPTION & SANCTUARY**



Rescue from shelter: \$20+
(Pull Fee, Microchip, Worming)



Transport to rescue: \$30



Initial Vetting: \$250+
(Spay/Neuter, Vaccinations, HW Tests)



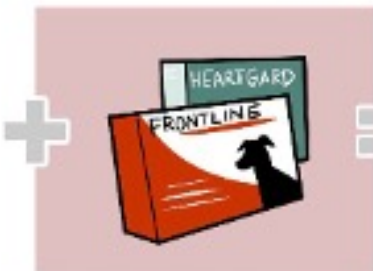
Dental: \$250+
(if needed)



Heartworm treatment: \$250+
(if needed)



Kenneling: \$100



Monthly preventatives: \$25+
(Flea/Heartworm)



Rescue's costs: \$425/\$925



ADOPTION FEE: Only \$250

Changing a dog's life forever:
PRICELESS



www.jackrusselladoptions.org

Illustrated by Lili Chin



We are always grateful for the following items:

- **Pie Crust/ Fruit Filling**
- **Cake Mix/ Frosting**
- **Canned Fruit**
- **Cornbread/ Biscuit Mix**
- **Rice & Boxed Potatoes**
- **Soup**
- **Macaroni and Cheese**
- **Canned Peas, Carrots & Corn**
- **Cereals**
- **Snack Packs**
- **Peanut Butter**
- **Tuna Fish**

**Thank You For Being A Part Of
Our Caring Community!**

1813 Highmarket Street, Georgetown SC 29440

(843) 527-3424

Open: Monday-Thursday 9am-12pm

Do you think it's important that as residents of Litchfield Country Club we have:

- Street lights?
- A security patrol?
- Deeply discounted bulk rate Spectrum Cable TV and High Speed Internet?
- Deeply discounted bulk rate trash collection service?
- A lost & found alert network for resident's pets?
- A Block Captain Network and Welcome Committee?
- Community activities?
- A neighborhood newsletter?
- A voice in the Waccamaw Neck POA, Litchfield Corridor Beautification, and local government?

None of these would happen without our Property Owners' Association, which depends on your participation and membership!

The Board are LCC volunteers. They put in many hours to run the POA and all its activities because they care about our neighborhood.

Joining the POA is not only a great way to meet fellow residents, but also the best way to have a voice in how the LCC neighborhood is maintained.

Please join us, come meet your neighbors, and consider volunteering your time and talents in helping us maintain this beautiful neighborhood!

2025 Annual Dues

\$65: Basic Membership

\$100+: Honors Membership

Honors members will be recognized in the newsletter

-----Membership Application - Please mail to: LCC POA, PO Box 482, Pawleys Island, SC 29585 -----

Name(s) (First) _____ Name (Last) _____

Address _____ Pawleys Island, SC 29585

Preferred Mailing Address _____

Phone(s) _____ E-Mail _____

2024 dues enclosed? Yes No

If yes, membership level: Basic Gold

Questions, comments, or suggestions _____

Litchfield Country Club Ladies Luncheon

Join your neighbors for an hour of food, fun and friendship!

The Litchfield Luncheon Club meets at noon on the second Monday of each month at various nearby restaurants.

Membership is simple: the only requirement is that the member is a resident or friend of the Litchfield Country Club community.

In January, we enjoyed a delicious meal at the scenic Pawleys Plantation Country Club. Our February meeting will be held at Wahoo's in Murrells Inlet. We hope you will join us!



Membership is free, and the friendships are forever!

Upon your first visit, you will be added to our email list for future luncheons. To make reservations--- OR for information about future luncheons---please contact Sallie Anderson at (843) 237- 9943, or email her at sallie361@msn.com.

Litchfield Beautification Foundation



LBF29585.com

Once again, we welcome Spring as the Litchfield corridor comes alive. While suffering damage from a variety of vehicle accidents, highway maintenance actions, and weather - LBF has continuously worked to refresh, upgrade, and maintain our beautiful median.

Thanks to community support, this grass roots, 501c3 nonprofit organization can sustain the appearance of the Litchfield corridor on Highway 17 and influence neighboring communities to follow. The POAs/HOAs and private donors represent 80% of our fundraising. In addition, we receive assistance of Georgetown County A-Tax Grants.

Our first flag day this year is Armed Forces Day, May 17th, as we pay tribute to men and women who currently serve in the United States' armed forces. We have flag days throughout the year that are funded by either private homeowners or organizations who fully support the efforts of the LBF and enjoy showing their patriotism along our corridor. Many of those sponsors are from right here in our local communities!

As we move forward, be sure to let new residents know that the beauty of the Litchfield medians is largely the result of consistent local financial support. It is part of what makes this area desirable. Your donations and word of mouth are our best source of advertising. Let them know – If you like what you see – take the next step! Visit our website, see the full story and become a donor!

Your support includes the following actions:


- Trash pick-up 7 days a week
- Mowing of 3.8 miles of median & shoulders weekly
- Regular pruning of all shrubs & trees
- Replacement of dead/damaged plant material
- Flag displays on patriotic holidays!

LBF is a non-profit, tax deductible, 501(c)(3) organization community.

Donations can be made from our web site LBF229585.com or sent to Litchfield Beautification, 41 Maintenance Rd., Pawleys Island, S.C. 29585

Don't forget to join in on the fun Friday dinners available at LCC!!!

Please contact Jodi for reservations to any of the great Club activities at: 843-237-3411 x6.




Chicken Parmesan
Carry Out, Dine In or Dine Al Fresco
Friday, February 7th - 4:00-6:30
Pick Up Located in Clubhouse Circle
OPEN TO THE PUBLIC

Italian House Salad
Garlic Bread
Chicken Parmesan
Served over Penne Pasta
Tiramisu
\$21.95

Tax and Gratuity NOT Included
BEER and WINE by the bottle available for sale

For Pick Up Call Early as Supply Is Limited
Al Fresco or Dine in Reservations Required
843-237-3411 x 5



Litchfield Country Club | 619 Country Club Drive, Pawleys Island, SC 29585



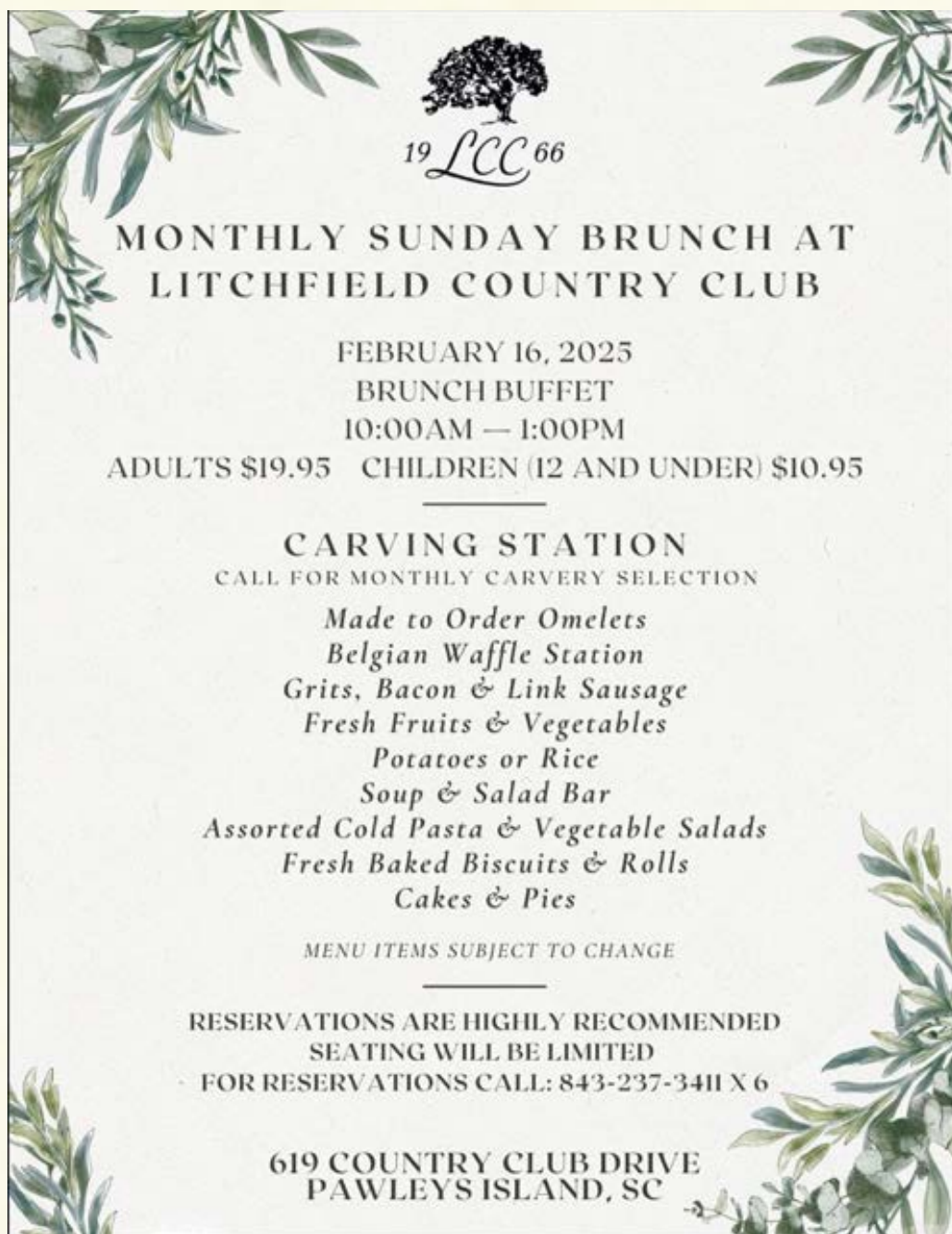
Valentine's Day
BUFFET
FEBRUARY 14, 2025
4-7PM

Shrimp & Corn Chowder
Salad Bar
Green Bean Almondine
Risi e Bisi
Baked Potato Bar
Carved Prime Rib
Chicken Puttanesca
Dessert Station
Fresh Rolls and Butter

\$39.95 PER PERSON

For reservations, please call Jodi Cotten
843-237-3411 X 6

LITCHFIELD COUNTRY CLUB
619 COUNTRY CLUB DR. PAWLEYS ISLAND, SC



**MONTHLY SUNDAY BRUNCH AT
LITCHFIELD COUNTRY CLUB**

FEBRUARY 16, 2025
BRUNCH BUFFET
10:00AM — 1:00PM
ADULTS \$19.95 CHILDREN (12 AND UNDER) \$10.95

CARVING STATION
CALL FOR MONTHLY CARVERY SELECTION

*Made to Order Omelets
Belgian Waffle Station
Grits, Bacon & Link Sausage
Fresh Fruits & Vegetables
Potatoes or Rice
Soup & Salad Bar
Assorted Cold Pasta & Vegetable Salads
Fresh Baked Biscuits & Rolls
Cakes & Pies*

MENU ITEMS SUBJECT TO CHANGE

RESERVATIONS ARE HIGHLY RECOMMENDED
SEATING WILL BE LIMITED
FOR RESERVATIONS CALL: 843-237-3411 X 6

619 COUNTRY CLUB DRIVE
PAWLEYS ISLAND, SC

Yard of the Month

Spring is just around the corner, so get those garden tools ready!

Andrea will be back on the scene picking out some of our special neighborhood garden delights very very soon.

It's hard to believe we had 5 inches of snow just a couple weeks ago. Gotta love Mother Nature: as our roller coaster temps continue!



Do You Miss "Scarlett" Birdseed from Pet Galley?

If you are looking for a birdseed connection for the good stuff, we have one for you! Ever since Pet Galley closed their doors last year, many folks have been searching for the Scarlett birdseed. Unfortunately, there are no retail stores in South Carolina that carry it. However, Peg Gerland has been able to get a pallet of several types of seed (Backyard Best, Deck & Patio, Safflower, Ultimate...) delivered to her door. If you are interested in getting the Scarlett seed as well, please reach out to Peg for information at either: (215)908-0845 or pgerland3@gmail.com She is looking to put another order in later this summer!

LCC POA Decorations Committee

Thank you to Sandra and her team for doing a wonderful job of decorating our entrance ways this past fall and winter!

The Decorations Committee is an open committee to anyone wishing to join and requires no specific skills or training. Committee members welcome all ideas, suggestions, and feedback.



Decorations

***Looking for a new chair**

(Again, a HUGE "Thank you" to Sandra for her excellent past leadership!)

Cheryl Aley

(217) 722-4298

Cheryl.aley@yahoo.com

Ann Corbett

(843) 237-9602

anncorbett60@yahoo.com

Paula Freeman

(770) 314-0811

spedmama411@gmail.com

Tommye Lyell

(843) 543-0019

tlyell@hotmail.com

Michelle Ransom

(910) 712-1418

71Chelle@gmail.com

My Furry Valentine Raffle for All4Paws Animal Rescue



Raffle tickets \$5 each or 5 for \$20

Celebrate the season of love by supporting All4Paws' lifesaving mission of compassion and love.
Raffle Ticket Draw Date: February 13, 2025 at 6 pm

OVER 40 AMAZING ITEMS! CHARLESTON HOTEL & DINNER ~ JEWELRY ~ SONIC FOR A YEAR ~ GIFT BASKETS & MORE!

3 ways to purchase raffle tickets:

Scan QR code or go to All4PawsSC.org website

Buy in person at All4Paws Rescue, Tues-Sat 11-5

Buy in person at Rescued Treasures, Tues-Sat 10-4



all4paws
ANIMAL RESCUE

708 Petigru Dr., Pawleys Island



The logo for Rescued Treasures, featuring three paw prints (two brown, one black) to the left of the text "Rescued Treasures" in a teal, cursive font.

11378 Ocean Hwy, Pawleys Island

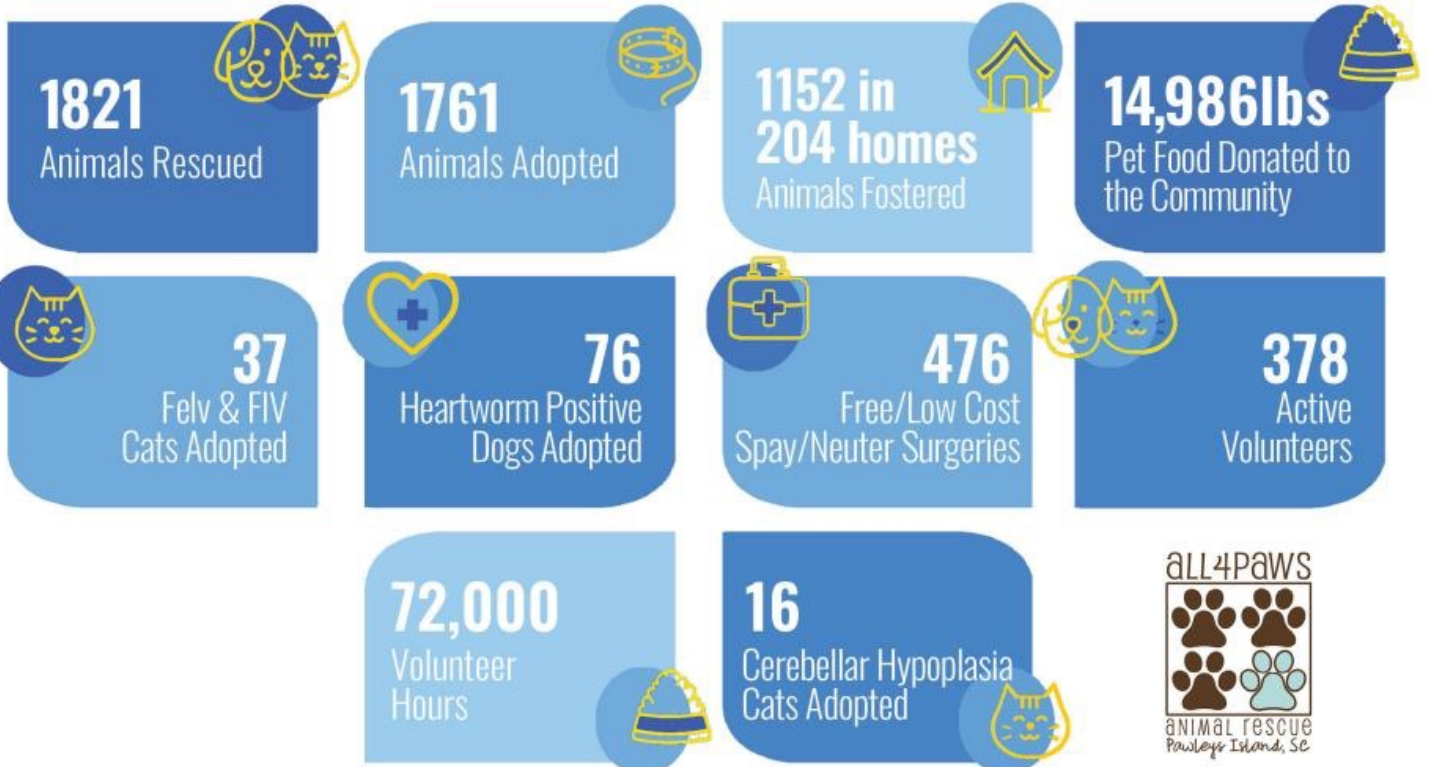


all4Paws
ANIMAL RESCUE
Pawleys Island, SC

2024 YEAR IN REVIEW

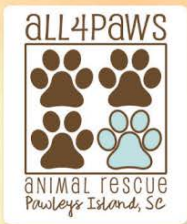
All4Paws achieved remarkable outcomes in 2024, with adoptions increasing by 7% from 2023 and an impressive 73% from 2019. Over the past seven years, All4Paws adoptions have nearly tripled, creating a lasting legacy for everyone involved in the All4Paws Family.

We are deeply grateful for the unwavering support of our donors, dedicated staff, passionate volunteers, and loving adopters. Together, through shared compassion, we have reached these incredible milestones.



MOVING, DOWNSIZING OR REDECORATING?

Consider donating your gently used furniture to Rescued Treasures. We can arrange for pick up. We also accept women's clothing, household goods, books, home decor and more! Your donations benefit All4Paws Animal Rescue in Pawleys Island.



Rescued Treasures



SCAN ME

AN UPSCALE RESALE BOUTIQUE BENEFITING ALL4PAWS
The discriminating bargain hunter's dream...a fine gift boutique at thrift store prices.

11378 Ocean Highway, Pawleys Island, SC 29585
Tuesday - Saturday • 10am - 4pm • 843.314.3316
www.RescuedTreasuresSC.org



all4PAWS
ANIMAL RESCUE

Adopt. 
 Donate.
VOLUNTEER. 
 Shop.



843.237.7297(PAWS)
All4PawsSC.org
708 Petigru Drive, Pawleys Island



Property Values In Litchfield Country Club

Nearly every neighborhood issue we hear from POA members mentions concern about their property value.

Let's look at LCC property values from a historical perspective. In the post-COVID era, since 2022, the average sale price of a property in Litchfield Country Club has risen dramatically. Only The Reserve and Heritage Plantation had higher average listing prices in 2023 than LCC. (Source: Peace Southby's - Roper Group as per Coastal Carolina Assn. of Realtors).

The eight houses that sold in LCC from late June through December 2024 ranged in price from \$335k to \$889K, with an average sale price of \$575k. One Crooked Oak property sold for \$889k on 10/31. Quality builders like Ameri-Built and Beverley Homes are rapidly developing our few remaining vacant lots. Recent re-sales have been closing at prices unimaginable just three years ago.

As of January 1, there were eleven houses for sale in LCC through realtors with asking prices ranging from \$395,000 to \$800,000, an average price of \$513. Three of these are new constructions. (source Realtor.com)

Last Fall's prime rate drop of ½ percent and indications of no rate increase in early 2025, will certainly motivate prospective buyers and will likely raise listing prices.

Fueling this demand is the fact that LCC does NOT have an oppressive HOA and does not have ridiculous activity monitoring or building restrictions. Substantial annual savings on Spectrum TV and internet as well as huge discounts on BFS trash removal and curbside recycling have driven POA membership. Our volunteer POA, which 82% of our residents have joined, discourages deed covenant violations and neighbor annoyances through polite requests; not threats, fines, assessments, or liens. Usually that has been effective. Both of our preferred builders, mentioned above, regularly submit building plans, complete with setbacks, square footage and elevations prior to breaking ground in LCC. POA Members have been diligent in submitting exterior remodeling, fencing, outbuildings, and swimming pool plans, etc. in advance for ARB approval. Our Highway 17 medians are well maintained and are generally litter-free.

Property Values In Litchfield Country Club (cont.)

Yes, we still have issues in our neighborhood. While not all of these are violations of your property's Deed Covenants (see litchfieldpoa.com), they are the basis of most complaints and potentially inhibit property value growth. These include:

- Parking of RVs and trailers in yards and driveways
- Owners advertising to rent their property on a short-term basis, for 90 days or less
- Trades operated from properties, business signs in yards and business signage on trucks parked overnight in driveways or yards
- Privately owned or rented golf carts and bicycles driven on the golf course
- Overgrown, unmaintained, and trashy yards
- Theft of and damage to county road signs
- Property flooding from improper or clogged water runoff
- Houses where construction has halted
- Solicitation

The POA board regularly addresses complaints about these issues, trying to politely and respectfully request compliance. We have and will continue to take some form of action on each of the above issues. The POA, however, is not here to arbitrate disputes between residents or to report code violations to the sheriff's office or to County officials. These are up to you, our residents. POA members seem to clearly support very limited and controlled commercial and residential development in the Waccamaw Neck.

We feel that Litchfield Country Club has many advantages over most local neighborhoods and LCC will continue to grow with rapidly increasing property values. Thanks for your help in making it so.

Don't be shy! Have you taken any interesting PICs lately? Please share your stories and pictures.

(All critters are welcome tame & wild)



Send in articles and pictures to Trish Mulligan at tmbu1025@gmail.com

Georgetown County Sheriff's Office

Animal Control and Enforcement Unit:

WILDLIFE

Certain wildlife can become problems. Here are a few tips that may minimize visits from unwelcome animals. 🐸🐸🐶🐍🐻

- Remove any **pet food** from outside your house after the pet has been fed.
- Secure garbage containers and eliminate garbage odors.
- Clean up birdseed scattered on the ground beneath feeders.
- Securely close all entryways to access beneath trailers or houses (including garage doors).
- Do not approach or handle wildlife that appears friendly.
- Don't leave small children outside unattended.
- Don't allow pets to run free. 🐕🐕🐕

For Further information regarding wildlife please contact the South Carolina Department of Natural Resources at 843-546-8523.

Website: <http://www.gcsheriff.org/animalcontrol.html>

Penalties for golf cart violations in Georgetown Cty:

Penalties for violation of state laws governing the operation of low speed vehicles – including golf carts – on roadways have recently changed! Such violations are considered a misdemeanor under state law, and **conviction is punishable by a fine of up to \$100 or imprisonment for up to 30 days.**

The following requirements are included in the laws for operation of golf carts in the state and in Georgetown County.

- A person operating a permitted golf cart must be at least 16 years of age and hold a valid driver's license.
- A golf cart operating on roadways must have liability insurance.
- A golf cart has to be permitted by the State of South Carolina. An individual or business owner of a vehicle commonly known as a golf cart may obtain a permit decal and registration from the Dept. of Motor Vehicles upon presenting proof of ownership and liability insurance for the golf cart and upon payment of a \$5 fee.
- A golf cart can only be operated during day light hours, including carts with headlights and turn signals.
- The operator of a permitted golf cart being operated on a highway or street must have in their possession: 1) the registration certificate; 2) proof of liability insurance for the golf cart, and 3) their valid driver's license.
- A permitted golf cart may be operated within four miles of the address on the registration certificate and only on a secondary highway or street for which the posted speed limit is 35 miles an hour or less. Highway 17 Business in Murrells Inlet is not considered a secondary highway.
- A golf cart cannot be operated on a public bike path or public beaches in Georgetown County.

Voluntary Donations for the Litchfield CC POA

In 2016, the Litchfield CC POA had started a new program. Anyone willing to donate above the basic membership fee of \$65, can do so anytime of the year. The Honors Members donate \$100+ . The donated extra money is used to help defray the increasing costs that the POA faces.

If you have already signed up for the basic membership and you want to be part of the voluntary donation program, just send in a check for the extra amount to Litchfield CC POA, PO Box 482, Pawleys Island.

Here is the list of Honors Members so far for 2025.

Honors Members

- Adkins, Roger & Sandra
- Agnew, Carroll & Robin
- Aichner, Woody & Esther
- Almond, James & Heather
- Anderson, Doug & Sallie
- Anglemyer, Grant & Janice
- Babyak, Larry & Nancy
- Bain, Brian
- Barnum, Thad & Erilynne
- Baxley, Gordon & Gigi
- Behney, Kevin & Ashley
- Berkeley, Andrea
- Brabham, Lamar & Elizabeth
- Brandl, Josef & Mary
- Brennan, Robert & Madonna
- Brewster, Joe & Joy
- Bryan, Frank
- Burdo, Hall & Tracey
- Cain, Harold & Catherine
- Camasso, Eileen
- Cannon, Bubba & Bleeker
- Caviaras, Nelson & Brooke
- Chandler, Angela
- Connolly, David
- Cusik, Phillip & Peggy
- Dadosky, Steve
- Daly, Megan
- Davis, Virginia
- Delventhal, Thomas & Loredana
- Dueger, Russell & Sherry
- Eanes, Mitchell S.
- Eaton, Maynard & Mary
- Fabor, John & Milson, Pam
- Fardelmann, Mark & Gail
- Farrell, Martin & Carole
- Farrell, Michael and Debra
- Farris, Mary Beth
- Fitzgerald, Elizabeth
- Fulghum, Kasper
- Gardner, Mel & Pamela
- Garrett, Arthur &
- Glover, Roger & MaryJo
- Gochinski, Timothy & Joann
- Goransson, Kurt & Irene
- Graubard, Steven & Karin
- Greene, Daryl & Chi
- Hall, Charles
- Hammond, Ann
- Harrington, Dan & Elinor
- Hays, David & Robin
- Heinz, Daniel & Linda
- Huggins, Ed & Meri
- Huss, Joe & Mikki
- Ijem, John
- Johnston, William & Christine
- Kalette, Mike & Regina
- Keating, Howard & Ellen
- King, John & Lynn
- Knause, John & Patricia
- Knight, Eugene & Diane
- Koeller, Arthur & Wilma
- LaPorte, Andre & Jane
- Lord, David & Patricia

Honors Members Cont.

- Macklen, Patricia
- MacWilliams, Katie
- Maese, Tom
- Mallard, Lowell & Joyce
- Maro, Carlo & Tammy
- Mathers, Jon & Brady, Jim
- McKeon, Kevin
- Meehan, Jeannie & Bennett, Ken
- Miga, Stephen
- Monk, Jean
- Montella, Leonora
- Morgan, Danny & Kathy
- Mulcaha, Bill
- Mulligan, Edward & Patricia
- Murphy, Gerard & Georgia
- Murray, Pierre
- Nelson, Robert & Joan
- Quillian, Ed & Kaye
- Noie, Julie
- Oakley, Jerry & Kim
- Oberembt, Marilyn
- Olsen, Alan & Shirley
- Parrilla, Joseph & Tatiana
- Pastore, Daniel & Karen
- Pinizzotto, Frank
- Poe, Jason
- Polster, Patrick & Tina
- Porter, Butch & Laurie
- Pratt, Terry & Lane
- Putman, Duane & Treva
- Quillian, Ed & Kaye
- Quinn, Mark & Shelley
- Rath, Mike & Sandy
- Reynolds, Todd & Jody
- Rinehart, Kyle & Bethany
- Ringer, Bill & Lynn
- Robertson, Kevin & Carolyn
- Robinson, Richard & Carolyn
- Ross, Frances
- Scoggins, John & Marty
- Scott, Jim
- Smith, James & Sloan
- Smith, Joel & Brenda
- Spinella, Peter & Karen
- Standish, Karen
- Strick, Donald & Hayley
- Sullivan, William & Beverly
- Swim, Edwin & Cynthia
- Taylor, Virginia H.
- Tebben, Robin
- Tempel, Joe & Holly
- Turner, Michael W.
- Waldrep, Lewis
- Waloszczyk, Mike & Rita
- Wellman, Frances B.
- Wickline, Marian
- Woodring, James

Georgetown County, South Carolina County Government

P.O. Box 421270
 129 Screven Street
 Georgetown, S.C. 29440-4200

Phone: (843) 545-3063
 Fax: (843) 545-3292

Numbers to Know (All begin with area code 843)

- **Animal Control, 546-5101**
- **Assessor, 545-3014**
- **Auditor, 545-3021**
- **Clerk of Court, 545-3004**
- **County Council, 545-3058**
- **Coroner, 546-3056**
- **Elections, 545-3339**
- **Finance, 545-3002**
- **Planning and Zoning, 545-3116**
- **Probate Judge, 545-3077**
- **Public Works Dept, 545-3438**
- **Register of Deeds, 545-3088**
- **Sheriff, 546-5102**
- **Storm Water Mgt, 545-3524**
- **Treasurer, 545-3098**

We need volunteer Neighborhood Watch drivers:

Our Litchfield Country Club POA (LCC POA) operates a neighborhood watch program staffed by volunteer member drivers. Watch Drivers cruise our streets daily looking for signs of trouble, illegal activity, speeding, improper parking, and neighbors in need of assistance. Drivers then log the results of their watch.

Our drivers typically perform their one-week tours on a quarterly basis. Each tour of our Litchfield Country Club roads takes a little over an hour. It is easy and a good way to meet neighbors, support safety, and become more familiar with your neighborhood. The Georgetown County Sheriff's Department has praised our neighborhood watch program as one of the best around.

As an added incentive, new Drivers will be offered a Free 9 hole golf round at Litchfield Country Club! Please contact Director Ken Fetzner for more information. Ken will 'show you the ropes' when you volunteer.

Thanks for your support of LCC!

Ken Fetzner
518-506-5973
kenfetz@gmail.com



**LITCHFIELD COUNTRY CLUB POA
WOULD LIKE TO EXTEND
A WARM WELCOME TO
ALL NEW LCC RESIDENTS
&
SPECIAL THANKS TO
FRESH MARKET & STATE FARM OF
PAWLEYS ISLAND WHO IN 2024
KINDLY DONATED
AND SUPPORTED
THE LCC WELCOME COMMITTEE**



Effective for 2025

Due to rising administrative and handling costs, we are going to require going forward that all AD placements must be made by a current POA Member and the cost to include the Ad will be \$25.00 per each Edition (\$25.00 each quarter). Please contact Trish Mulligan with your interest to pursue at tmbu1025@gmail.com. Thank you...